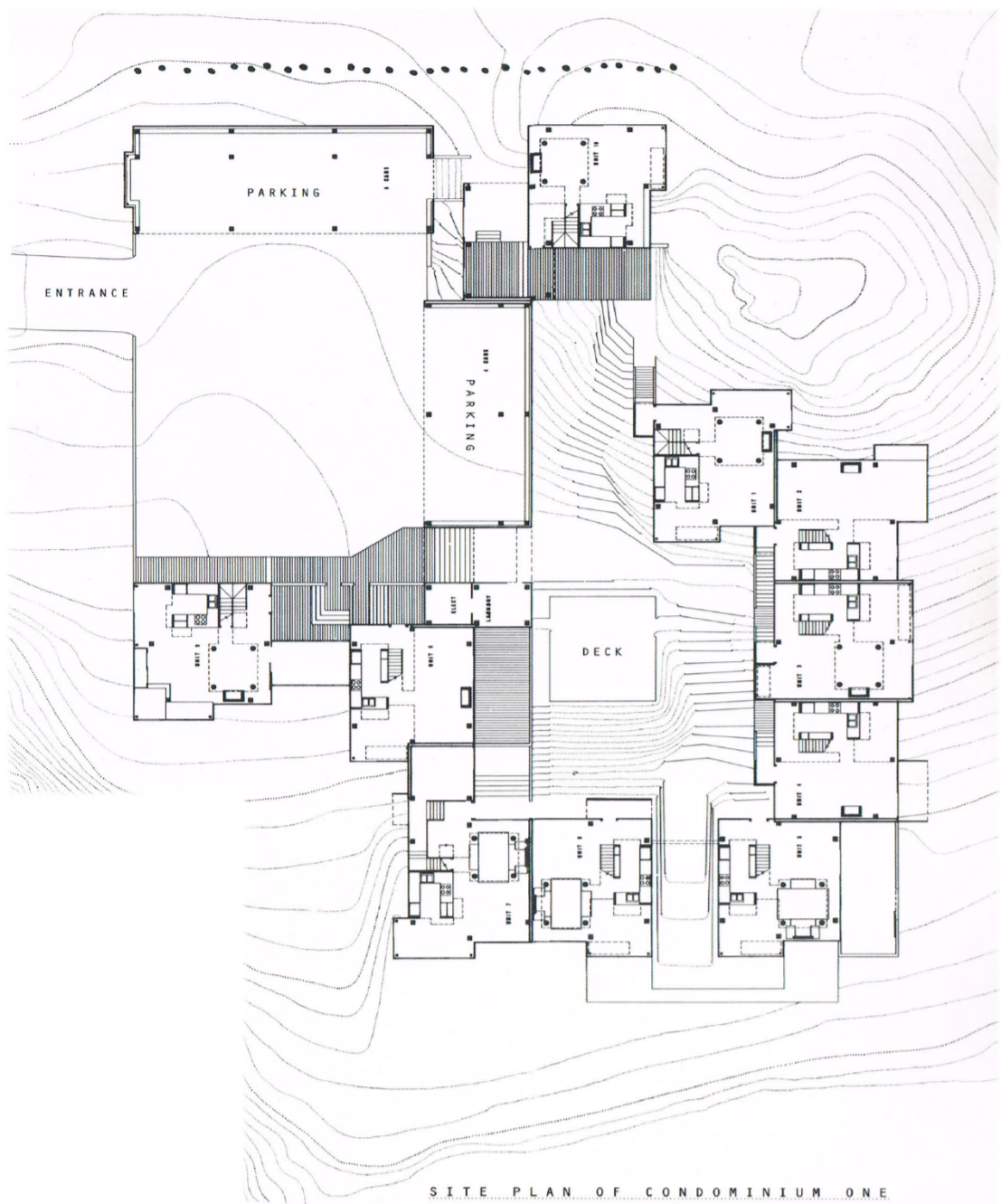


SEA RANCH CALIFORNIA C. MOORE 1963

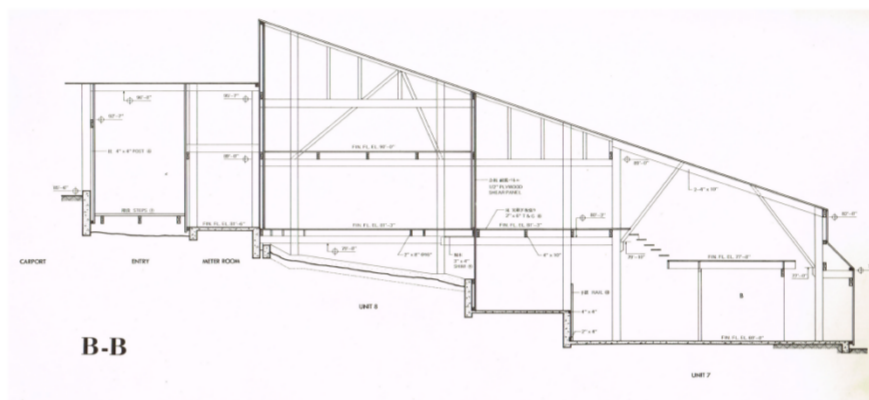


SITE PLAN OF CONDOMINIUM ONE

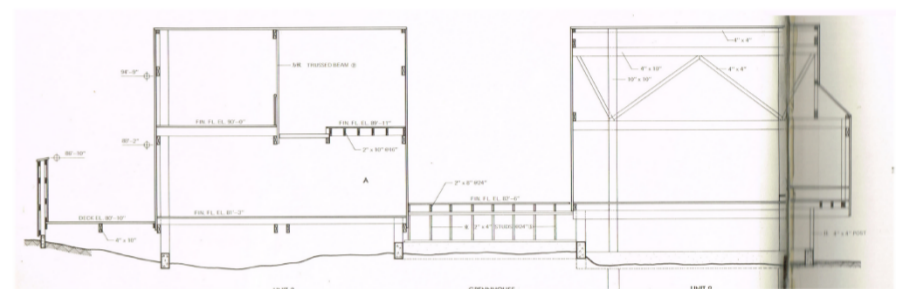
PLANTA BAJA



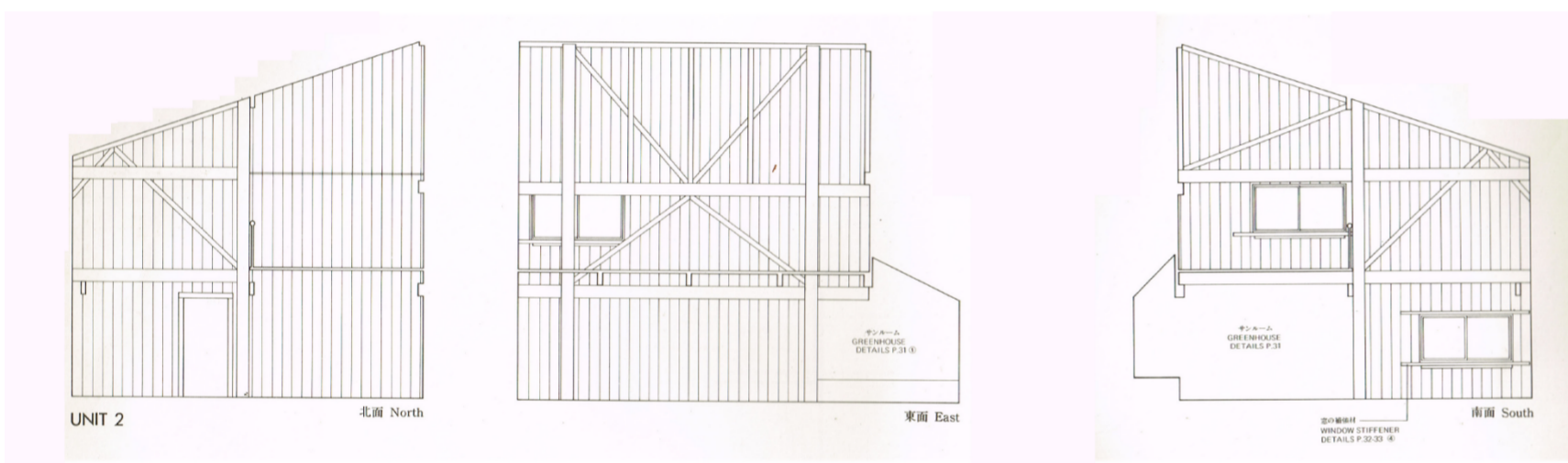
EMPLAZAMIENTO



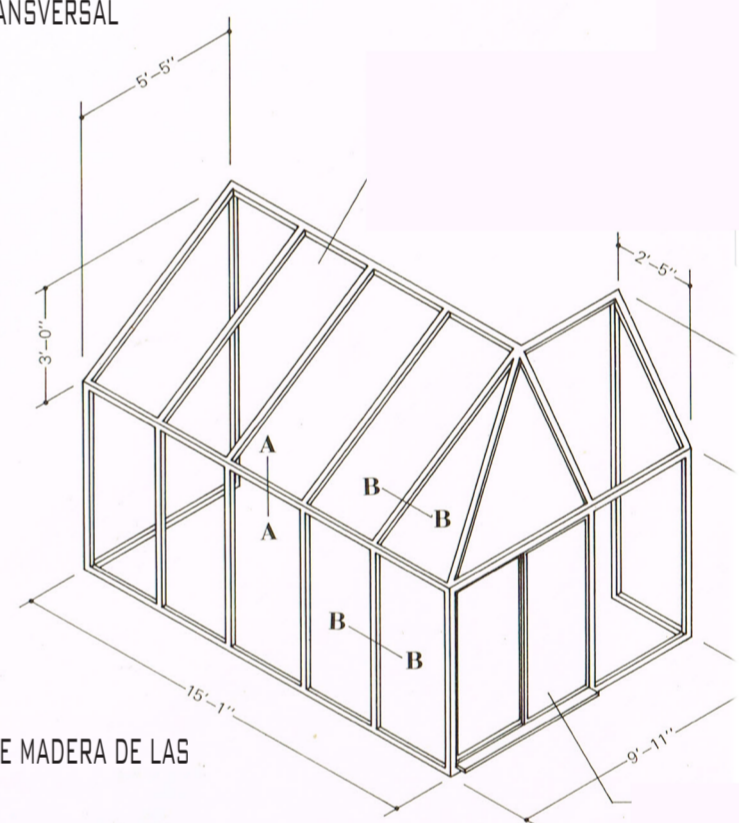
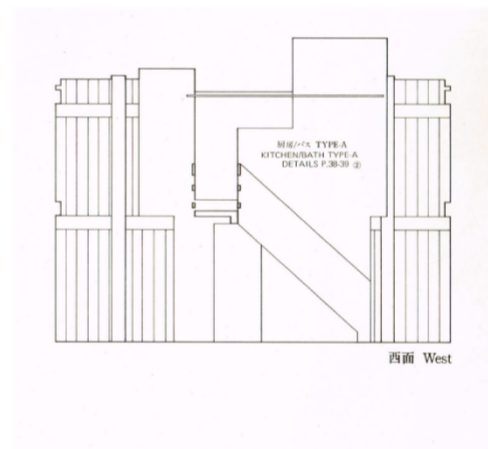
SECCION LONGITUDINAL CON SENTIDO DEL DESNIVEL DESNIVEL



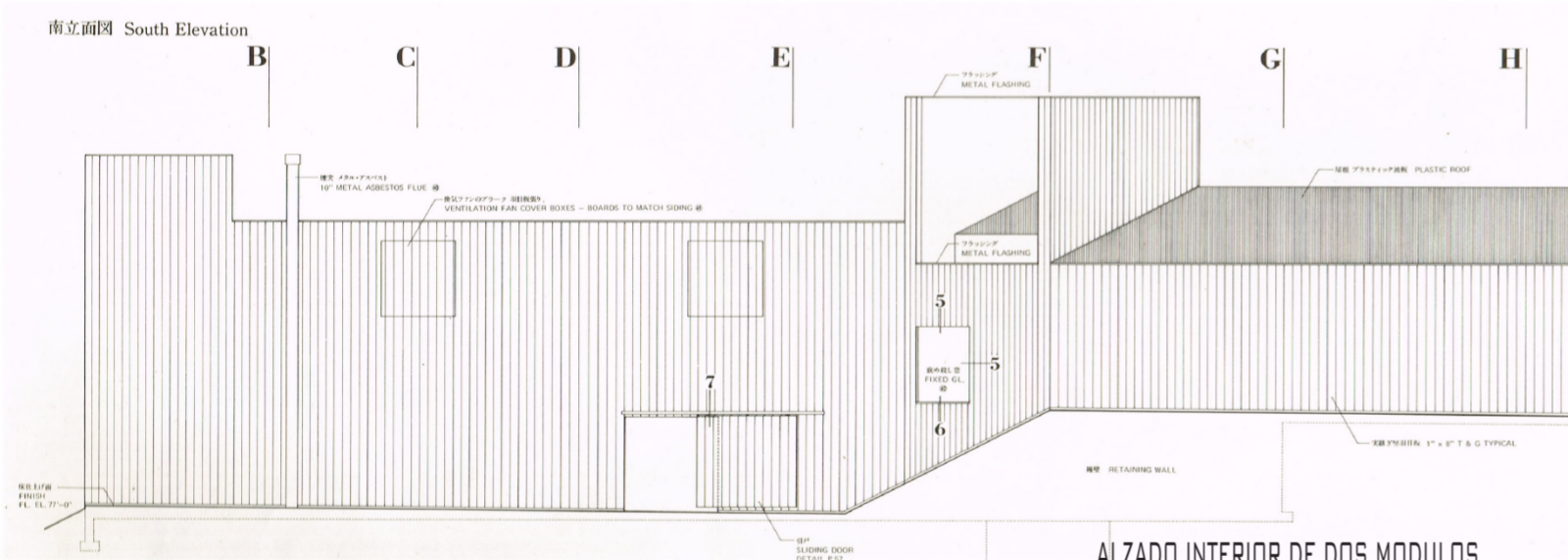
SECCION TRANSVERSAL



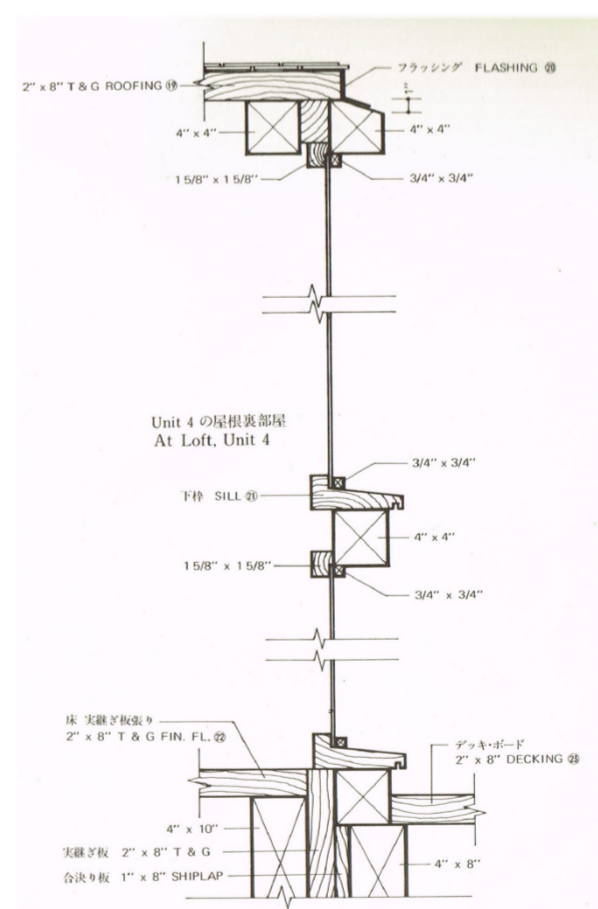
CUATRO ALZADOS DE UNA UNIDAD DEL CONJUNTO



ESTRUCTURA DE MADERA DE LAS UNIDADES



ALZADO INTERIOR DE DOS MODULOS



DETALLES CONSTRUCTIVOS Y CARPINTERIAS DE MADERA

